

COMPULSORY PILOTAGE

The compulsory pilotage areas in Japan are broadly divided into two categories; i.e., the compulsory areas in ports and those in waters including channels, straits and adjacent port(s).

AREA		VESSEL
Port Areas Category A	<ul style="list-style-type: none"> • Yokosuka • Sasebo • Naha 	(*) <ul style="list-style-type: none"> • Vessels of foreign registry with gross tonnage 300 tons or more, • Vessels of Japanese registry with gross tonnage 300 tons or above engaged in international voyages or • Vessels of Japanese registry with gross tonnage 1,000 tons or above engaged in domestic service.
	<ul style="list-style-type: none"> • At Kawasaki 	<ul style="list-style-type: none"> • Vessels with gross tonnage 3,000 tons or above. • Vessels carrying dangerous goods are the same as (*).
	<ul style="list-style-type: none"> • Kanmon (Berthing/Unberthing vessels) 	<ul style="list-style-type: none"> • Vessels with gross tonnage 3,000 tons. Vessels loaded with goods dangerous and Vessels entering/leaving sections 1 - 4 of Wakamatsu are the same as (*).

Waters Category B	<ul style="list-style-type: none"> • Tokyo Bay (including Ports of Tokyo, Chiba and Kisarazu) • Ise-Mikawa Bay (including Ports of Nagoya, Yokkaichi, Kinuura and Mikawa) • Osaka Bay (including Ports of Kobe, Osaka, Hannan and Akashi Strait) • Bisanseto (including Port of Mizushima) • Kurushima Strait • Kanmon Channel (Passing vessels) 	<ul style="list-style-type: none"> • Vessels with gross tonnage 10,000 tons or above.
-------------------------	--	--

PILOTAGE CERTIFICATE

Certification

Shipmasters who wish to navigate in compulsory pilotage area without pilot shall have pilotage certificate.

Pilotage certificates for the fore-mentioned compulsory pilotage areas are given to masters meeting the following requirements:

- Masters serving in vessels of Japanese registry or vessels flying flags other than Japanese flags but chartered (time-chartered vessels to be excluded) by a person or persons who are entitled to own Japanese flag vessels.
- Masters recognized by competent District Transport Bureau to have been engaged in navigation in the

pilotage district in question, aboard vessel to which the *gross tonnage restrictions (See below) within such particular compulsory pilotage area apply, 4 times or more.

[Note] Example of Tonnage restrictions.

Masters wishing to have certificate available for:

- vessel up to 20,000 GRT shall have experience aboard vessel less than 10,000 GRT.
- vessel more than 20,000 GRT shall have experience aboard vessel more than 20,000 GRT.

COMPULSORY PILOTAGE AREAS

- TOKYO BAY
- ISE MIKAWA BAY
- OSAKA BAY
- SETO INLAND SEA
- KANMON CHANNEL
- SASEBO*(See Fig.2 District No.29)
- NAHA*(See Fig.2 District No.34)



Compulsory for vessels over 300/1,000 GRT
(See Category A)



Compulsory for vessels over 3,000 GRT
(See Category A)



Compulsory for vessels over 10,000 GRT
(See Category B)

[Note] *Areas are omitted.

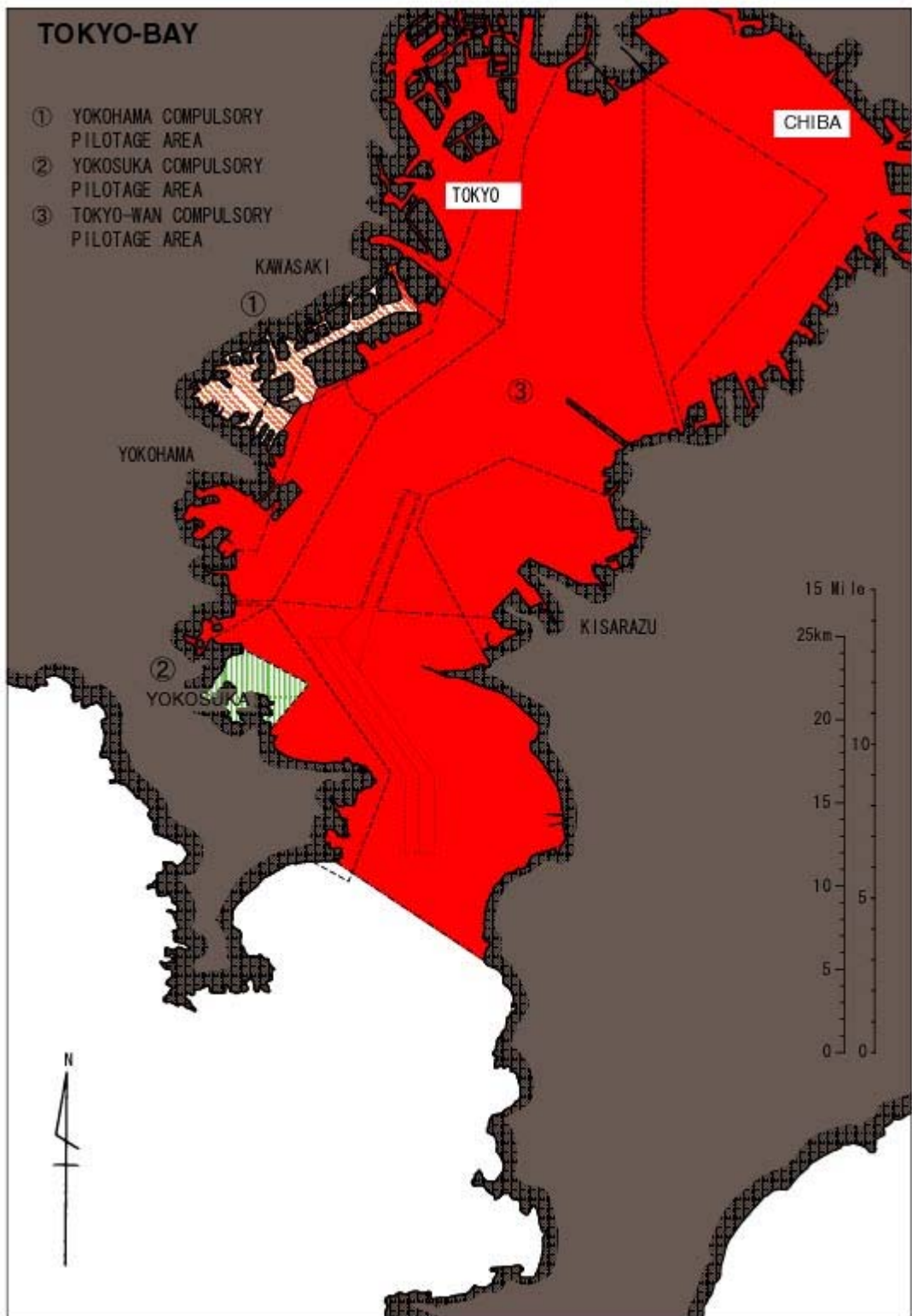


Fig.4-1

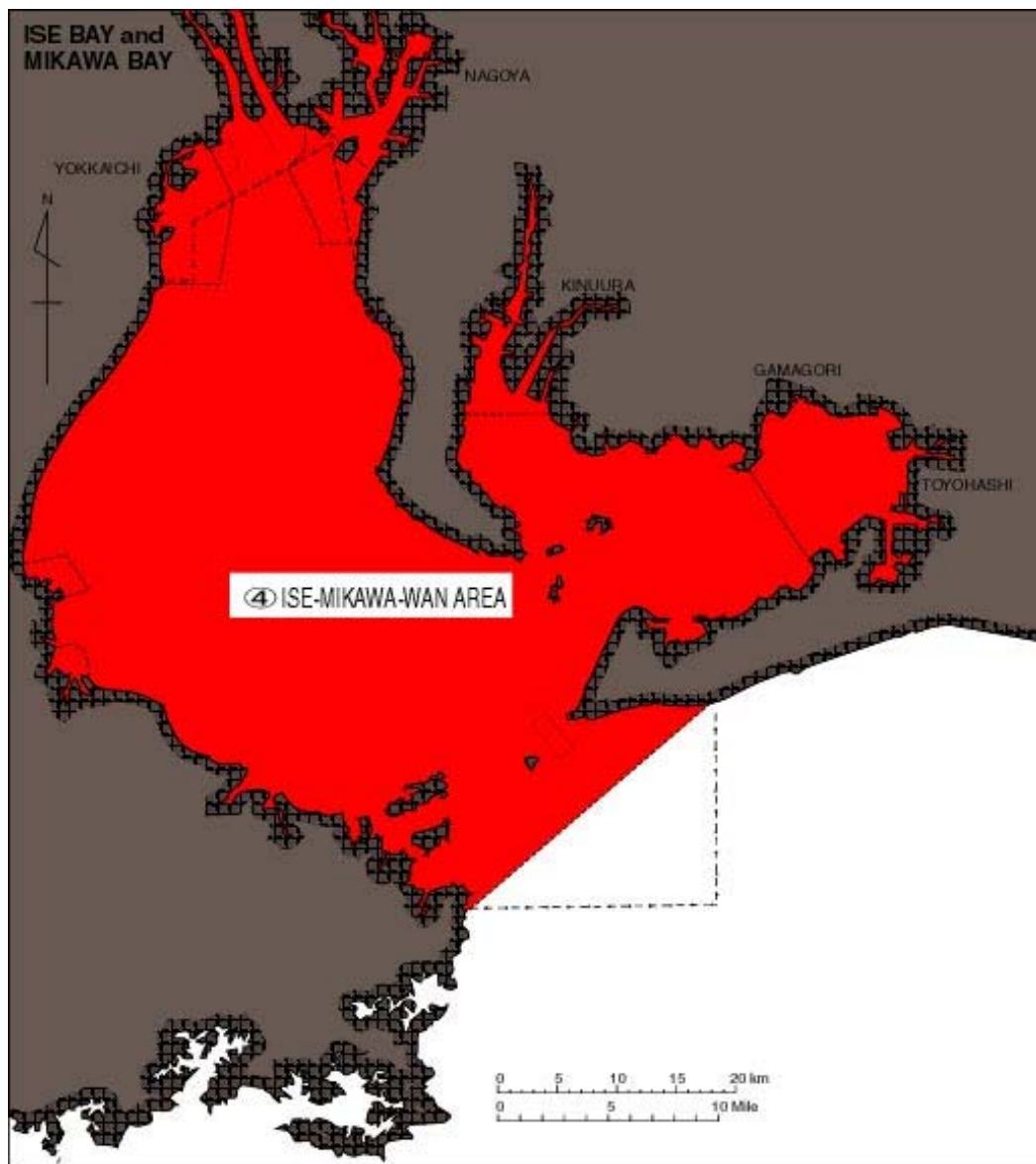


Fig.4-2

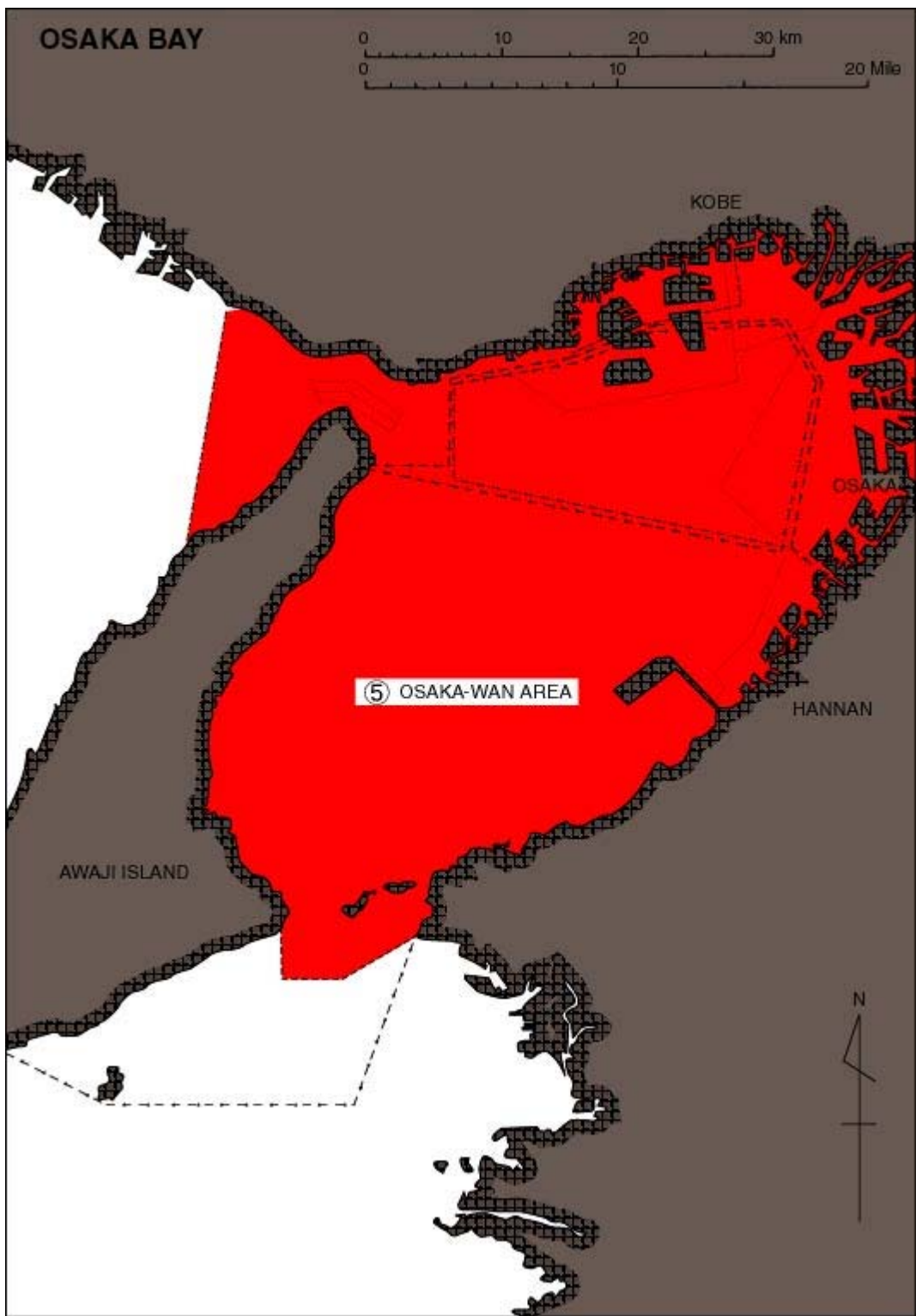


Fig.4-3

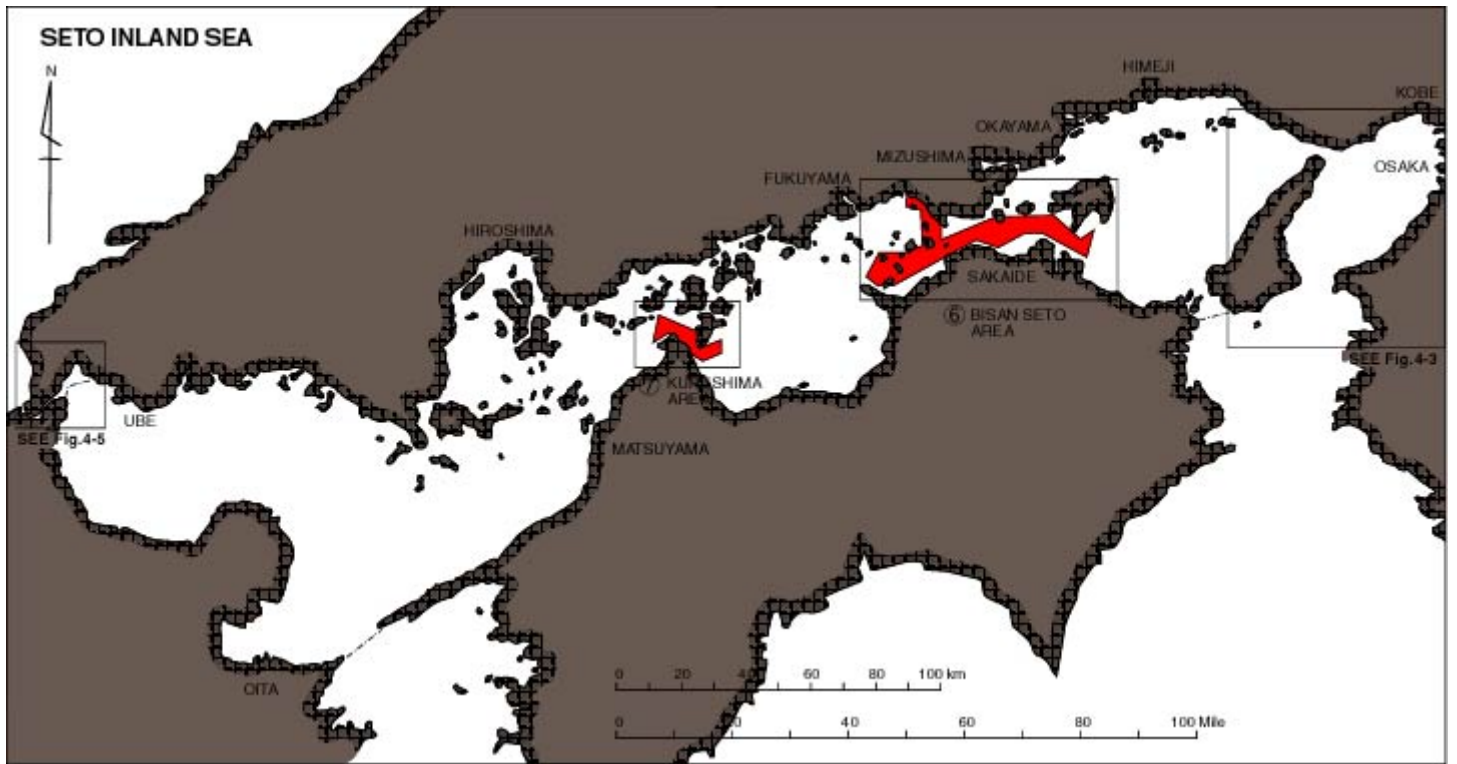


Fig.4-4

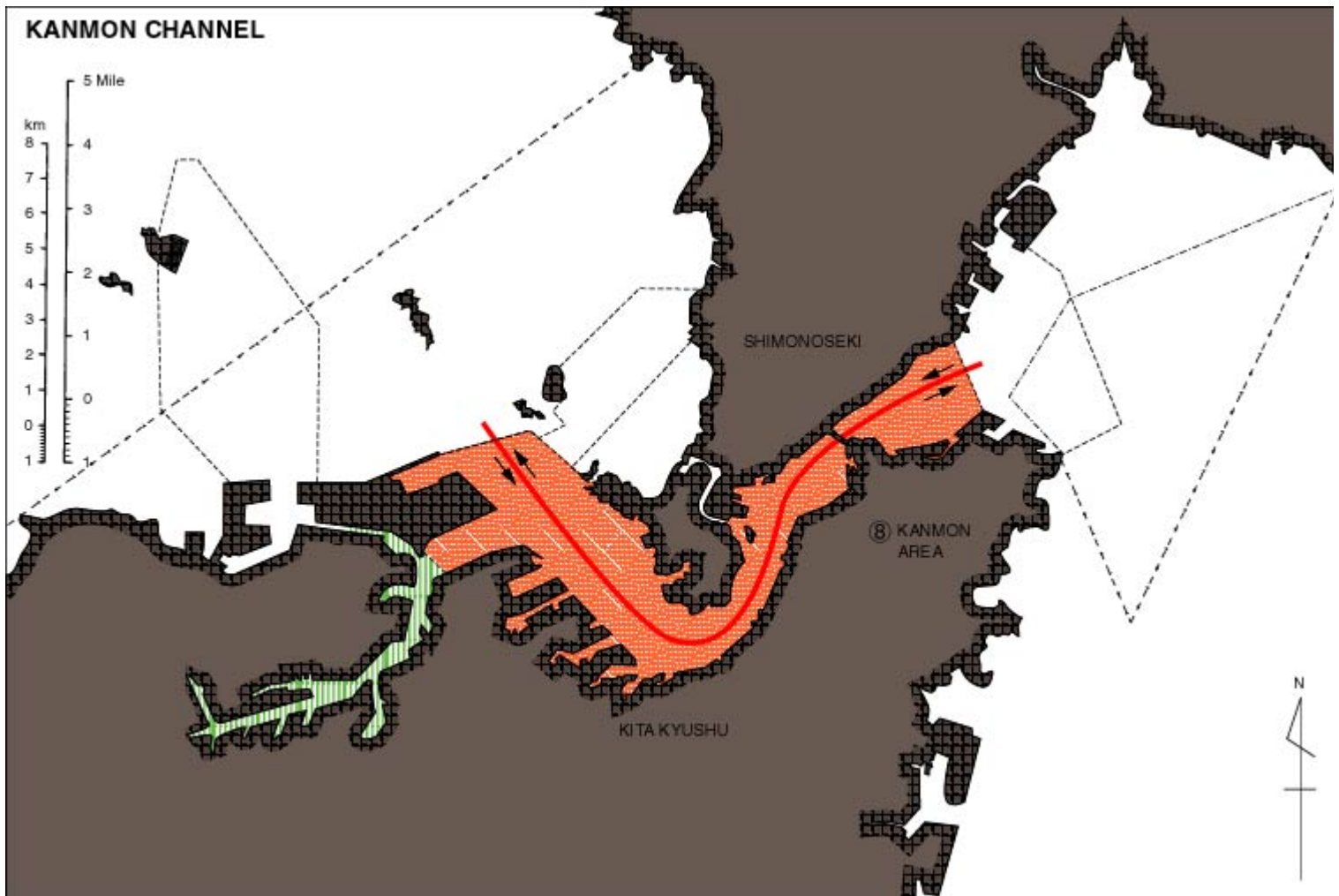


Fig.4-5